

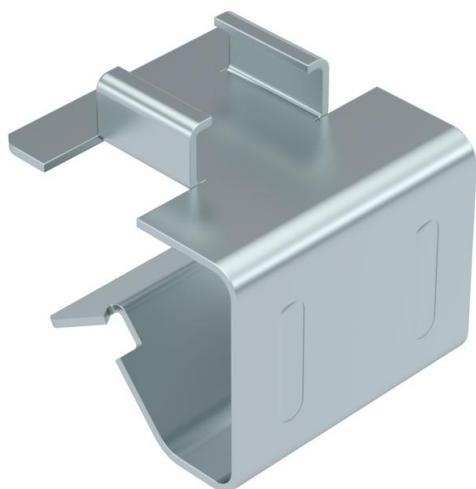
Technical data sheet

Seat piece for SCC support clamp

Item number: 1488609



Adapter to accept support clamps, type SCC (flange thickness 1–4 mm). Fastening through knocking onto steel girders.



CE

St	Steel
ZL	Zinc slat

Master data

Item number	1488609
Type	SCCA 12-15
Description 1	Seat
Description 2	for beam clamp SCC 1-4
Manufacturer	OBO
Dimension	12-15mm
Material	Steel
Surface	Zinc slat
Surface standard	
Smallest sales unit	100
Unit of quantity	Piece
Weight	1.7 kg
Weight unit	kg/100 pc.

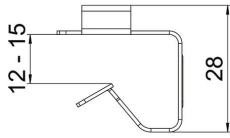
Technical data sheet

Seat piece for SCC support clamp

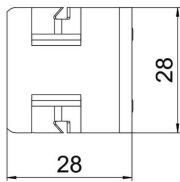
Item number: 1488609



Dimensions



Length	28 mm
Width	28 mm
Height	28 mm
Dimension L	11 mm



Technical data

Connection type/component	Miscellaneous
Fastening type	Clamp
Flange thickness F max.	15 mm
Flange thickness F min.	12 mm
Hinge, adjustable	no
Hinged	no