

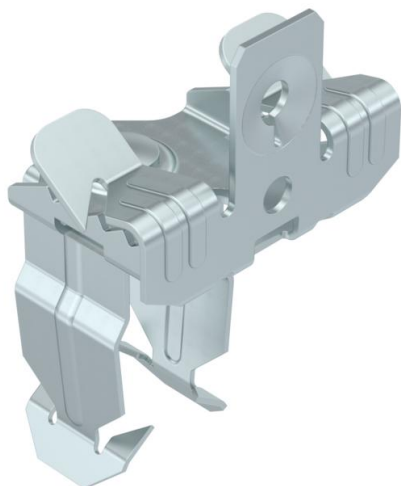
Technical data sheet

Support clamp, with pipe seat at bottom

Item number: 1488383



Support clamp for mounting pipes. Open pipe seat at bottom. Fastening through knocking onto steel girders.



CE

St Steel

ZL Zinc slat

Master data

Item number	1488383
Type	SCVPO 3-7 D25
Description 1	Beam clamp
Description 2	with bottom pipe clamp 25 mm
Manufacturer	OBO
Dimension	3-7mm
Material	Steel
Surface	Zinc slat
Surface standard	
Smallest sales unit	50
Unit of quantity	Piece
Weight	3.5 kg
Weight unit	kg/100 pc.

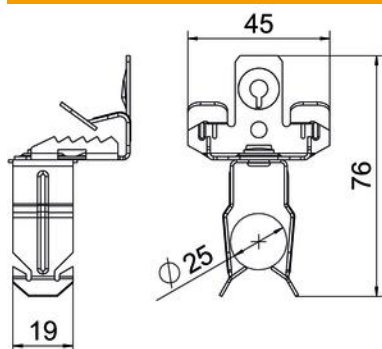
Technical data sheet

Support clamp, with pipe seat at bottom

Item number: 1488383



Dimensions



Length	76 mm
Width	45 mm
Height	39 mm
Dimension L	76 mm
Maß W	45 mm

Technical data

Connection type/component	Pipe/cable
Fastening type	Clamp
Flange thickness F max.	7 mm
Flange thickness F min.	3 mm
Pipe/cable diameter, max.	30 mm
Pipe/cable diameter, min.	22 mm
Hinge, adjustable	no
Hinged	no